

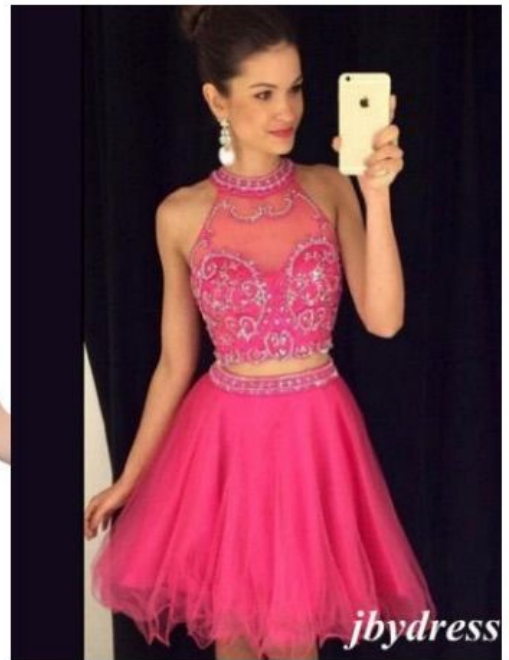
## Acceptable Dress Styles



Modest shorter length



Modest keyhole



Modest midriff

## Not Appropriate Dress Styles



Too short



Keyhole too low



Midriff too revealing and opening by leg to high

## Acceptable Mens Styles



Shirt and Tie, Dress pants



Suits



Tuxedo

## Not Appropriate Mens Styles



Jeans, no tie



Shorts, t-shirt, ball cap